

# SICLA



## Acoustic Classification System

Once detected a target, must be known, accurately and quickly, what platform is and its characteristics. Acoustic classification is one of the most important complementary function for contact detections on board submarines or surface ships. **SICLA** is designed to provide a real-time advantage on board.

**SICLA** is a highly versatile system which can be adapted to any hardware and software configuration. It can be integrated into any combat system, pc or laptop, and connected to any acoustic device such as sonars, sonobuoys and recorders. SICLA is a powerful tool that allows the operator to obtain the target classification and identification in a fast and precise way by means of the multiple and simultaneous contact analysis, graphic tools and an acoustic intelligence database (ACINT).



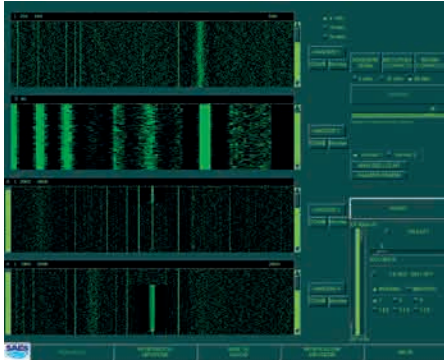
SICLA

Especialistas en Acústica y Electrónica Submarina  
[electronica-submarina.com](http://electronica-submarina.com)



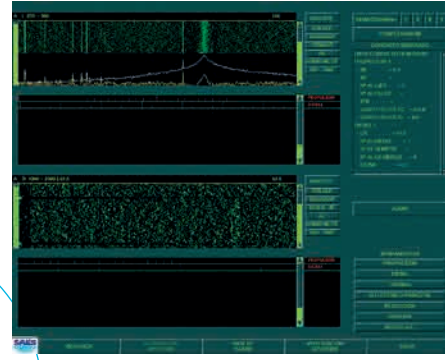
## ANALYSIS OF CONTACTS

LOFAR, ZOOM, DEMON, SPECTRO and AUDIO.  
High frequency resolution. Setting Various playback speed. Real-time and delayed.

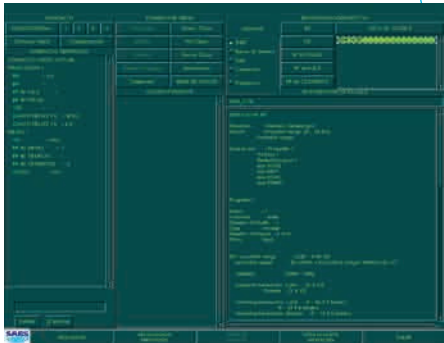


## CONTACT HYPOTHESIS GENERATION

To design an hypothetic contact using standard noise sources:  
Propeller, Diesel Motor, AC, Auxiliaries, Turbines, Gear Box and Electric Motor.

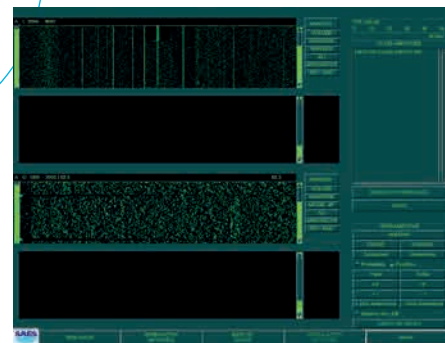


## CAPABILITIES



## ACOUSTIC INTELLIGENCE DATABASE (ACINT) AND OPERATOR DATABASE.

To make queries and examine the source noise parameters.



## CONTACT HYPOTHESIS VERIFICATION

To compare and match the parameters of previously analyzed contact to database.

SICLA uses the most advanced techniques of signal processing as FFT, fast filters and demodulation.

## Main Features

- **SICLA** can be integrated with a Combat system, work in stand alone way or be installed in facilities as a Mission Center or an acoustic laboratory.
- **SICLA** is an open and scalable system. It adapts to the needs of any combat system.
- **SICLA** has been design under hard criteria of cost-effectiveness, reliability, maintainability and high growth capability.
- **SICLA** allows digital recording of the acquired signals and post-analysis and using them for ACINT, on board or ashore, as well as analysis and classification in both real time and delayed time.
- **SICLA** performs Fast Time Analysis of signals in deferred time.



SICLA can be used not only as a classification system, but also to support tactical decisions and onboard training.

**SICLA is in service on platforms around the world.**